

Welcome to Nottingham Trent University



NTU



In the heart of the UK

Nottingham is a vibrant,
multicultural, and
student-friendly city

Less than 2 hours from
London, Manchester,
Liverpool, and York

About us

- Our origins date back to 1843
- We are one of the largest universities in the UK, with over **39,000** students and more than **4,400** members of staff across our **5** campuses
- **We are one of the UK's most popular universities***
- Our staff and student community includes individuals from over **160** different countries

* UCAS Acceptance data 2021

www.ntu.ac.uk



NTU
Nottingham Trent
University



Winner
Student life
International



**The Queen's
Anniversary Prizes**
for Higher and Further Education



NTU

The Guardian University Guide 2022

Top 20 ranking for:

- Agriculture, Forestry and Food
- Architecture
- Building, Town and Country Planning
- Fashion and Textiles
- Modern Languages and Linguistics

Top 30 ranking for:

- Anatomy and Physiology
- Chemistry
- Criminology
- Design and Crafts
- Economics
- Forensic Science and Archaeology
- Pharmacy and Pharmacology
- Philosophy

Top 30 ranking in 13 different categories!



TOP 5

Most sustainable
universities in the
world*

*2020 UI GreenMetric World
University Rankings



Our graduates



Work-ready graduates

- One of the UK's most employment-focused universities
- **100% of our courses offer work-like experiences**
- 175 of NTU courses are currently accredited by professional bodies, employers or external organisations
- Personalised learning



Placement Opportunities

NTU is in the Top 10 UK Universities for the number of students on year-long work placements.

Many of our courses offer year-long placement opportunities, making UG courses either 3 or 4 years and PG courses 1 or 2 years.

Most courses include professional development/careers focused modules, including designated work placement periods. Internships are actively encouraged.



NTU's Employability Team

Dedicated to providing support and guidance for students and alumni with:

- Sourcing internships
- Finding work experience opportunities
- Securing paid employment
- CV development
- Preparing for interviews

JobShop
Part-time jobs for NTU students

InPlace
Smart Placement Solutions

FutureHub

Employability support is available for up to **3 years** after graduation!

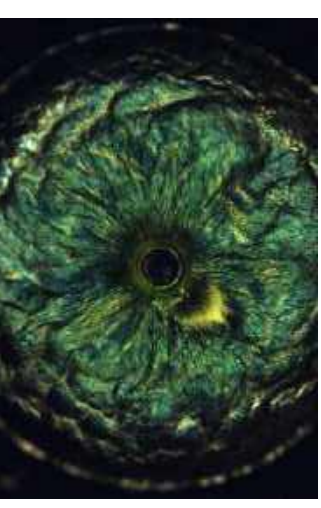


Our research



Our Research

- Our researchers work to develop world-leading projects that have life-changing and global impact.
- In 2021, the university received the Queen's Anniversary Prize for Higher and Further Education, recognising our outstanding research in the field of cultural heritage.
- In the latest Research Excellence Framework (REF 2021), **83% of NTU's research activity** was assessed to be either **world-leading** or **internationally excellent**



NTU strategic research themes

Safety and Security
for Citizens and
Society

Medical
Technologies and
Advanced Materials

Health and
Wellbeing

Sustainable
Futures

Global
Heritage

NTU

www.ntu.ac.uk

Our Campuses





City Campus

- School of Social Science
- Nottingham Business School
- Nottingham Law School
- School of Art and Design
- School of Architecture, Design and Built Environment
- Centre for Broadcast Journalism



Clifton Campus

- School of Science and Technology
- School of Art and Humanities
- Nottingham Institute of Education



Confetti

A renowned creative quarter campus for vocational careers in Animation, Games, Graphic design, Film, Live events, Music and visual effects.

Brackenhurst Campus



- School of Animal Rural and Environmental Sciences
- 200ha estate of arable and livestock farming

School of Art and Design



Nottingham School of Art & Design

- Established in 1843, one of the oldest design schools in the UK
- In the top 100 Art Schools in world (QS rankings, 76)
- Global community of 4000 students
- In the heart of creative Nottingham



Our Departments

- Fashion Textiles & Knitwear
- Fashion Management, Marketing and Communication
- Design and Digital Arts



Our Industry Partners



CHARTERED
SOCIETY OF
DESIGNERS

George.



JOHN SMEDLEY
MADE IN GREAT BRITAIN

next

MADE®

Boden

Paul Smith

Birmingham
CONFIDENTY



FLEET PERRY



Boots



TOPSHOP

ASOS
discover fashion online

Pentland

GYMSHARK

OASIS
OASISSTORE.COM

Sony
World
Protagonist
AWARDS



COACH

wilko

L'ORÉAL
PARIS

URBAN OUTFITTERS

ALL SAINTS

G . F
SMITH

ANN INC.
ANN TAVELER | LOFT | L&P | J&P

M&S
EST. 1884



GENESIS
IMAGING

Nottingham
Playhouse



Nottingham
School of
Art & Design

27/07/2022

School of Arts and Humanities

Here for the epic thinkers!

NTU

School of Arts and Humanities

- History, Museum and Heritage Studies
- English, Creative Writing, and Philosophy
- Journalism and Media Studies
- Linguistics and Language Teaching (TESOL)

MA TESOL: <https://www.ntu.ac.uk/course/arts-and-humanities/pg/ma-teaching-english-to-speakers-of-other-languages-tesol>

Degrees and Applying

- **UG and PG (Taught) Degrees**
 - <https://www.ntu.ac.uk/international/study-and-courses>
- UG (BA): 3 years (4 years if the degree has a so-called sandwich option)
- PG (MA): 1 year
- **Research (PhD) Degrees (3 years)**
 - <https://www.ntu.ac.uk/research/research-degrees-at-ntu/how-to-apply>

Section 5: Research Project (for PhD)

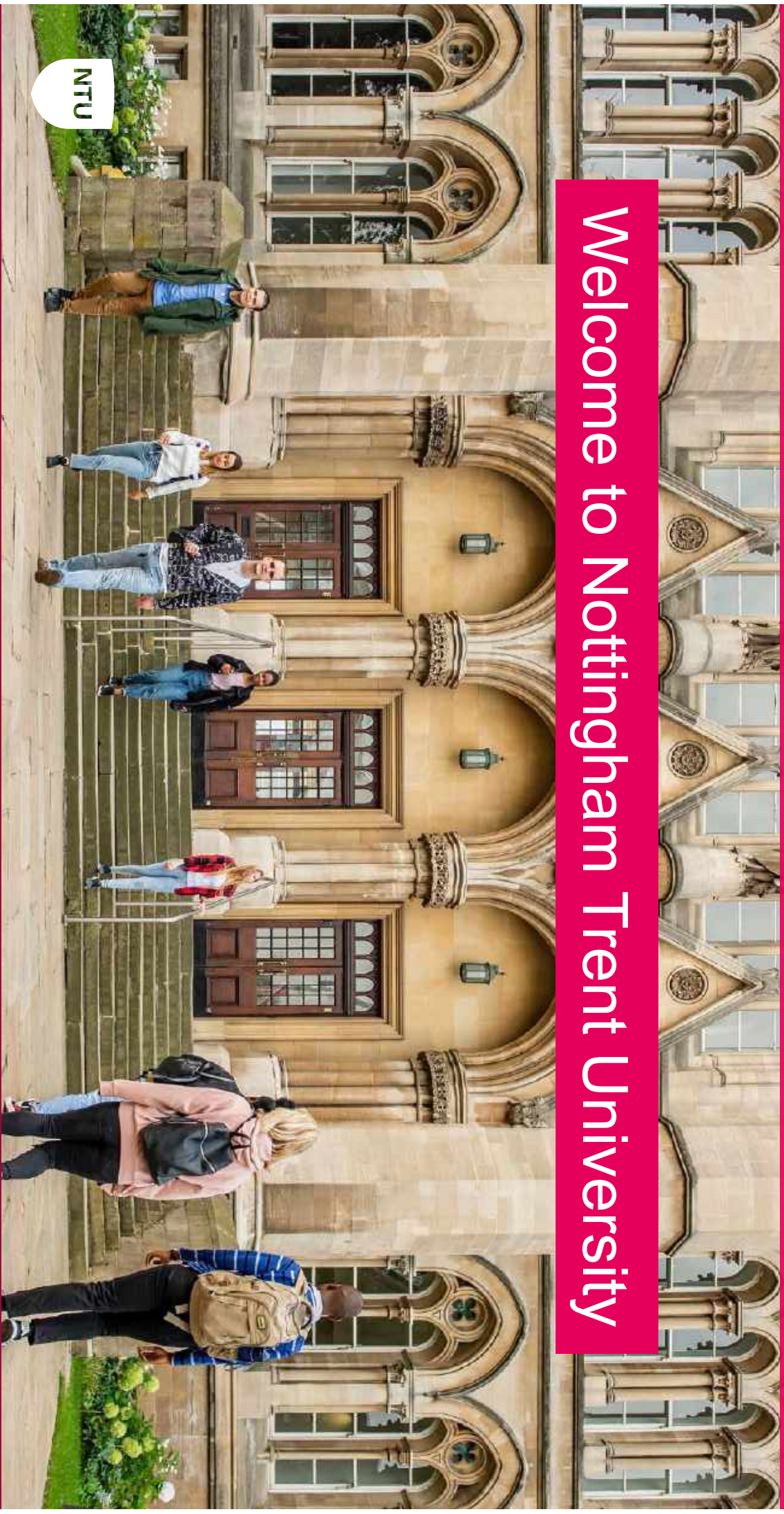
- **Research Proposal and Personal Statement (mandatory):**
- Provide a research proposal with a maximum of 1,500 words clearly describing:
- the research area or topic that you wish to study for a PhD;
- the research question(s) you wish to investigate including an explanation of why the proposed research area is likely to lead to high quality research outcomes;
- why it interests you;
- the methodology i.e. how you propose to research it;
- the research context, in which you should explain how your proposed PhD research area or topic relates to other work in the field;
- the purpose and originality of your research i.e. how you think your project might contribute to understanding of your subject.
- You will also need to include a proposed timeline of your research and a bibliography or reference list.
- Please note, if you are applying to the **School of Science and Technology** you need to submit a research proposal of **no more than 500 words** that should be a clear and concise statement and include references with web links to at least five journal articles or relevant reviews that report the state of the art in the field related to your proposed PhD research area or topic.

- Default: 6.5 with minimum of 5.5 in each component
- Journalism: 7.0 with a minimum of 6.0 in reading and writing, and 5.5 in speaking and listening
- Science and Technology (UG, Y1): 6.0 with minimum of 5.5 in each component

- <https://www.ntu.ac.uk/international/study-and-courses/your-application/entry-requirements/english-language-requirements>

Welcome to Nottingham Trent University

NTU





Welcome to Nottingham Trent University



NTU



Nottingham Trent
University



In the heart of the UK

Nottingham is a vibrant,
multicultural, and
student-friendly city

Less than 2 hours from
London, Manchester,
Liverpool, and York

About us

- Our origins date back to 1843
- We are one of the largest universities in the UK, with over **39,000** students and more than **4,400** members of staff across our **5** campuses
- **We are one of the UK's most popular universities***
- Our staff and student community includes individuals from over **160** different countries

* UCAS Acceptance data 2021



www.ntu.ac.uk



Nottingham Trent
University



Winner
Student life
International



The Queen's
Anniversary Prizes
for Higher and Further Education



The Guardian University Guide 2022

Top 20 ranking for:

- Agriculture, Forestry and Food
- Architecture
- Building, Town and Country Planning
- Fashion and Textiles
- Modern Languages and Linguistics

Top 30 ranking for:

- Anatomy and Physiology
- Chemistry
- Criminology
- Design and Crafts
- Economics
- Forensic Science and Archaeology
- Pharmacy and Pharmacology
- Philosophy



Top 30 ranking in 13 different categories!



TOP 5

Most sustainable
universities in the
world*

*2020 UI GreenMetric World
University Rankings

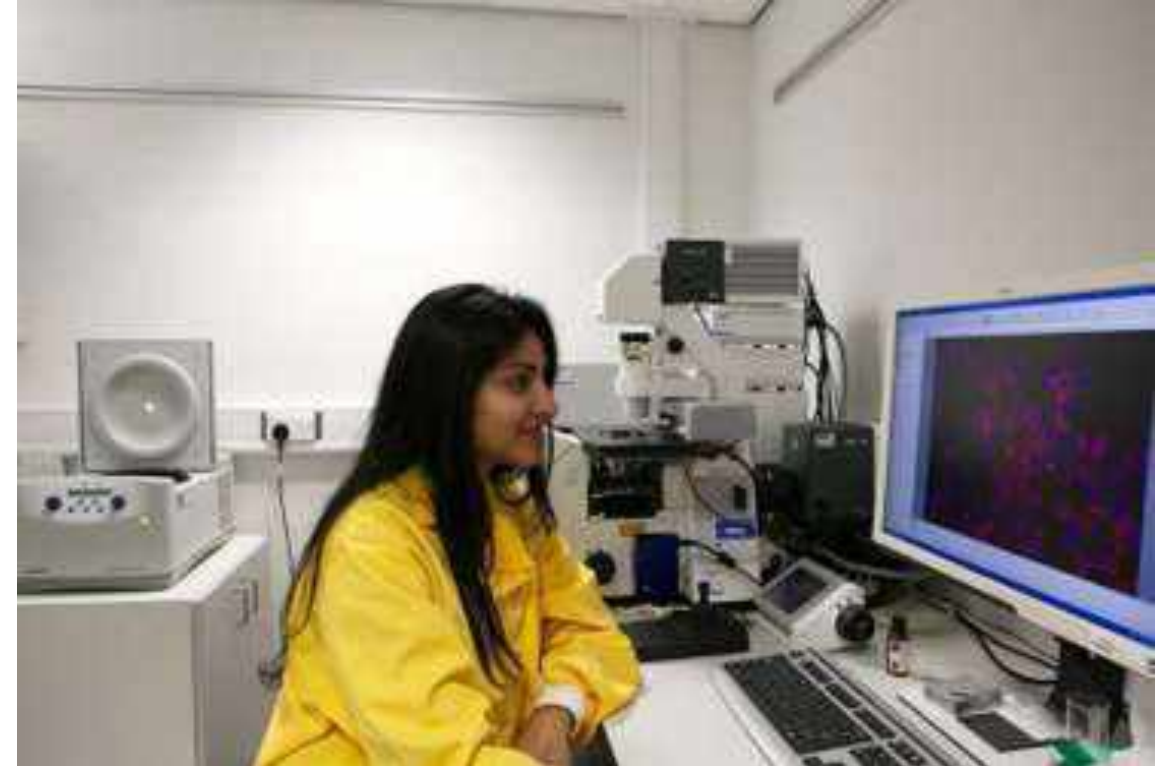


Our graduates



Work-ready graduates

- One of the UK's most employment-focused universities
- **100% of our courses offer work-like experiences**
- 175 of NTU courses are currently accredited by professional bodies, employers or external organisations
- Personalised learning



Placement Opportunities

NTU is in the Top 10 UK Universities for the number of students on year-long work placements.

Many of our courses offer year-long placement opportunities, making UG courses either 3 or 4 years and PG courses 1 or 2 years.

Most courses include professional development/careers focused modules, including designated work placement periods. Internships are actively encouraged.



NTU's Employability Team

Dedicated to providing support and guidance for students and alumni with:

- Sourcing internships
- Finding work experience opportunities
- Securing paid employment
- CV development
- Preparing for interviews



Employability support is available for up to **3 years** after graduation!

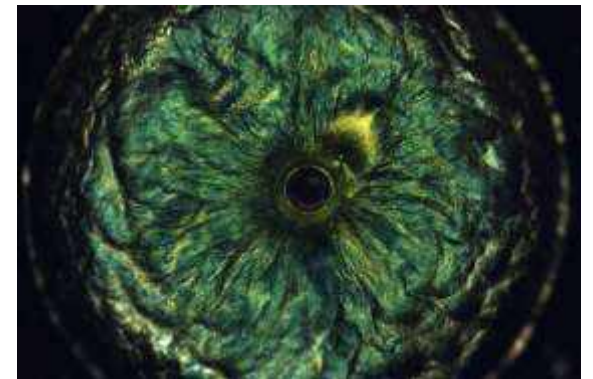


Our research



Our Research

- Our researchers work to develop world-leading projects that have life-changing and global impact.
- In 2021, the university received the Queen's Anniversary Prize for Higher and Further Education, recognising our outstanding research in the field of cultural heritage.
- In the latest Research Excellence Framework (REF 2021), **83% of NTU's research activity** was assessed to be either **world-leading** or **internationally excellent**



NTU strategic research themes

Safety and Security
for Citizens and
Society

Medical
Technologies and
Advanced Materials

Health and
Wellbeing

Sustainable
Futures

Global
Heritage



Our Campuses





City Campus

- School of Social Science
- Nottingham Business School
- Nottingham Law School
- School of Art and Design
- School of Architecture, Design and Built Environment
- Centre for Broadcast Journalism



Clifton Campus

- School of Science and Technology
- School of Art and Humanities
- Nottingham Institute of Education



Confetti

A renowned creative quarter campus for vocational careers in Animation, Games, Graphic design, Film, Live events, Music and visual effects.

Brackenhurst Campus



- School of Animal Rural and Environmental Sciences
- 200ha estate of arable and livestock farming

School of Art and Design



Nottingham School of Art & Design

- Established in 1843, one of the oldest design schools in the UK
- In the top 100 Art Schools in world (QS rankings, 76)
- Global community of 4000 students
- In the heart of creative Nottingham



Our Departments

- Fashion Textiles & Knitwear
- Fashion Management, Marketing and Communication
- Design and Digital Arts



Our Industry Partners

